

7-1 Identifying GCF

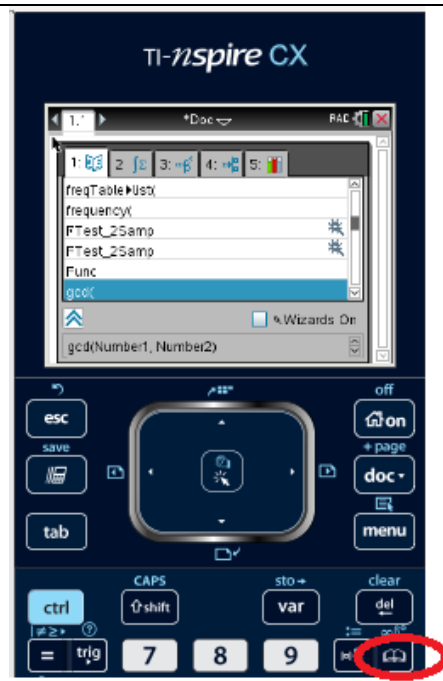
**** Have your graphing Calculator!*****

Find the greatest common factor:

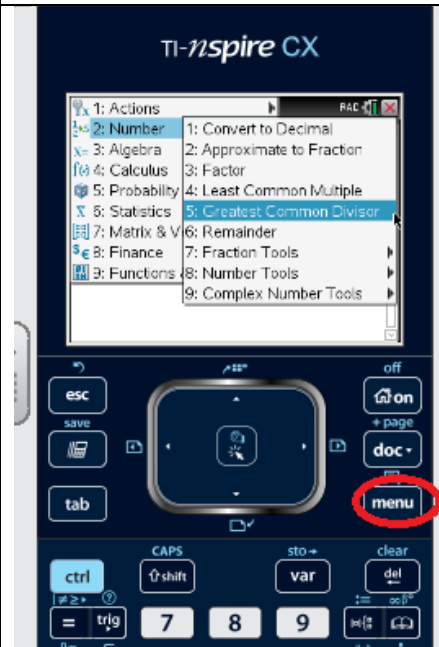
24:

64:

Method 1 – Press the CATALOG key and go to gcd and select



Method 2 – Press MENU, 2, 5



Find the GCF of:

$$12x^2, 28x$$

Steps to finding GCF of Monomials

1)

2)

3)

Find the GCF of:

$3x, 3y$

$7x^3, 14x^2$

$9st, 12sv$

$55mn, 11mn^2$

Find the GCF of:

more challenging...

$8p^2q, 24pq^2$

$28xy^2z^3, 42x^3y^2z$

$16a^2b^3, 6ab^4, -12a^3b^2$